

BIANCHINI'S MARKET

# LOVE LOCAL

Born in the Bay Area



PORTOLA VALLEY  
SPECIALS



## Tri-Tip

Tri-tip is a flavorful, triangular cut of beef from the bottom sirloin, known for its tenderness and rich marbling. It's often grilled or roasted, making it a popular choice for barbecue enthusiasts.

**9.99** lb.

### THE PERFECT PAIRING!

Smooth, balanced taste with notes of ripe berries, subtle spice, and a hint of earthy undertones, delivering a refined and elegant finish.

A & D  
Pinot Noir  
750 ml.

**18.99**



★ READERS' CHOICE BEST PLACE TO BUY MEAT ★



## Mary's Boneless Skin-On Organic Chicken Breast

A high-quality, sustainably raised poultry option known for its tender texture and rich flavor. Free from antibiotics and GMOs, it offers a healthier, more natural choice for a variety of dishes.

**7.99** lb.



## Homemade, All Natural Pork Italian Sausages

Hot or Mild. Crafted from high-quality pork and seasoned with a blend of traditional Italian spices, delivering robust flavor. Their juicy texture and savory taste make them perfect for grilling, pasta dishes, or hearty sandwiches.

**5.99** lb.



## FARM FRESH

### Lakeside Organics Farm Organic Broccoli Florets (Ninos)

Tender, bite-sized pieces of fresh, organic broccoli, harvested at peak ripeness for maximum flavor and nutrition. Grown without synthetic pesticides, they provide a healthy, versatile ingredient perfect for salads, stir-fries, or steaming.

**1.49** lb.

### Lakeside Organics Farm Organic Red Leaf Lettuce

Crisp, vibrant leaves with a slightly sweet and mildly nutty flavor, making it a perfect base for fresh salads. Grown without synthetic chemicals, it offers a nutritious and eco-friendly choice for any meal.

**99¢** ea.



## SAY CHEESE



### Beecher's Flagship Handmade Cheddar

Save \$1.00 ea.

A rich, award-winning cheese with a perfect balance of sharpness and creaminess, aged for 15 months to develop its complex flavor. Made with high-quality milk from local farms, it offers a pure, artisanal taste that enhances both snacking and cooking.

6 oz.

**7.99** ea.



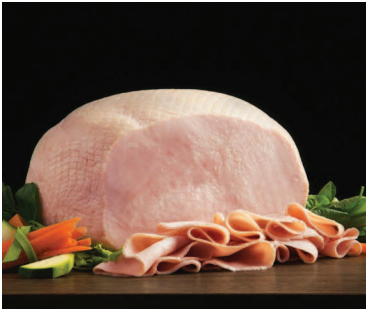
### Imported French Emmenthaler

Save \$3.00 lb.

A classic, nutty cheese with a mild, slightly sweet flavor and a smooth, firm texture, traditionally crafted from cow's milk. Known for its signature holes and rich taste, it's perfect for melting in fondue or enjoying on a cheese board.

**13.99** lb.

★ DELI FRESH SELECTIONS ★



**Boar's Head  
Low Sodium Turkey**

Save \$2.00 lb.

Offers a lean, flavorful deli meat with reduced salt, making it a heart-healthy option without sacrificing taste. Crafted from premium, oven-roasted turkey breast, it's perfect for sandwiches, wraps, or salads.

**12.99**lb.



**Sauteéd Green Beans with  
Peppers  
and Onions**

Save \$1.00 lb.

A vibrant, flavorful dish that combines the crispness of green beans with the sweetness of sautéed peppers and onions. Lightly seasoned and cooked to perfection, it's a healthy and colorful side that pairs well with a variety of main courses.

**8.99**lb.



**BAKERY DELIGHT**

**Two-Bite  
Brownies**

Decadent, fudgy treats designed for indulgence in a convenient, bite-sized form. Perfectly rich and chocolatey, they satisfy cravings without the need for a fork, making them an ideal snack or dessert on the go.

10.9 oz.

**5.99**ea.

★ STOCK THE BAR ★



**Wairau River  
Sauvignon Blanc**

750 ml.

**18.99**



**Quilt Wines Threadcount  
California  
Red Wine**

750 ml.

**25.99**



**Ballast Point  
Sculpin IPA**  
Original or Grapefruit  
6 Pack Can  
Save \$3.00

**10.99**

**GROCERY FAVORITES**



**Purely Elizabeth  
Granola**

Selected Varieties  
8-12.5 oz.  
Save \$3.00

**6.99**



**Elmhurst  
Nut Milk**

Selected Varieties  
32 oz.  
Save \$2.00

**5.99**



**My Mochi  
Ice Cream**

Selected Varieties  
7.5-9.1 oz.  
Save \$2.00

**5.99**



**Blue Zones Kitchen  
Bowls**

Selected Varieties  
8-9 oz.  
Save \$1.40

**7.89**

PRICES EFFECTIVE OCTOBER 16 - 22, 2024  
PORTOLA VALLEY 3130 Alpine Rd, Portola Valley, CA 94028

f / BIANCHINIMARKET.COM / FORWARD TO A FRIEND

